

Profiles™ Steel Doors



Versatile, affordable options.

Coupling distinctive styling with affordability, Profiles steel doors offer versatile front entry and house-to-garage options. Designed to suit multiple home styles, these doors feature triple-shadowed panel embossments for greater detail.

Top: Profiles, Sedona Glass, Door – 996HD, Sidelite – 139SL
Bottom: Profiles, Screen Vented Glass, Door – 1004HD

Traditions Steel Doors



Back to basics.

It's back to basics with Traditions. This line of steel doors combines attractive designs and value-based options to create a great, cost-conscious alternative for front entry and house-to-garage.


Top: Traditions Door – TS210
Bottom: Traditions, Satin Etch Glass, Doors – TS289XE




Profiles™ & Traditions Steel Doors

Find style at an affordable price point with options to match any home style and budget in Profiles and Traditions doors. Fire-rated options on 6'8" solid-panel doors make a perfect choice for house-to-garage.

- 1-¼" lock stiles.
- 12-½" lock blocks.
- No stile lines.
- Primed, ready-to-paint surface.

 WBDR / HVHZ Options: Look for this icon to find door styles that can be configured for WBDR or HVHZ.*

 20-Minute Fire-rated options available on 6'8" solid-panel doors. See pages 238–243.



Profiles™ Steel

Features 24-gauge steel, smooth surface and triple-shadowed panel embossments for greater definition.



Door & Glass



Traditions Steel

Features 25-gauge steel, standard embossed smooth surface. All 8'0" doors are 24-gauge steel with standard embossments.



Door



Glass



■ = Available
• = Not Applicable
P = Paint

Profiles™

Traditions

Door Widths

2'0"	■	■
2'4"	■	■
2'6"	■	■
2'8"	■	■
2'10"	■	■
3'0"	■	■
3'6"	■	•

Door Heights

6'6"	■	■
6'8"	■	■
7'0"	■	•
8'0"	•	■

Glass Options

Decorative	15	15
Privacy & Textured	7	7
Internal Blinds	■	■
Screen Vented Lites	■	■
Simulated Divided Lites	■	■
Grilles Between Glass	■	■
Removable Wood Grilles	■	■
Fixed Grilles	■	■
Low-E	■	■
Clear	■	■

Additional Options

Finish	P	P
--------	---	---

Retrofit Hinged Patio Doors

Replacing common slider sizes? Find hinged patio door options in this section. For more about our patio door systems, see pages 258–265.

5'0" Patio Opening = (2) 2'4" Doors
6'0" Patio Opening = (2) 2'10" Doors

*Please verify that there is a Therma-Tru Impact-rated product approval for the configuration before buying.

**Decorative glass designs are shown in Profiles only.

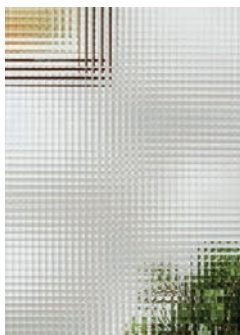
Note: Finish colors may vary from an actual application due to fluctuations in finishing or printing. Glass privacy ratings may be more or less than indicated, based on glass design and size of glass. Glass designs may differ from depiction due to size and hand craftsmanship of glass. See your Therma-Tru seller or visit www.thermatru.com for details on glass privacy ratings and designs, limited warranties and exclusions, ENERGY STAR qualified products and product approvals.

Privacy & Textured Glass



NEW

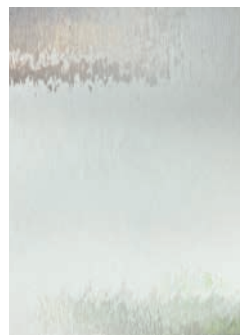
Reeded (XK)
Glass Privacy Rating: **7**



Geometric (XG)
Glass Privacy Rating: **7**



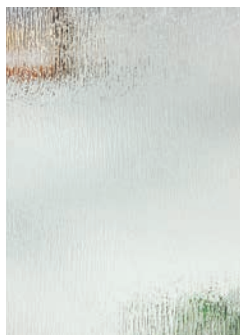
Satin Etch (XE)
Glass Privacy Rating: **10**



Chord (XC)
Glass Privacy Rating: **10**



Chinchilla (XJ)
Glass Privacy Rating: **10**



Rainglass (XR)
Glass Privacy Rating: **8**



Granite (XN)
Glass Privacy Rating: **10**

Glass Privacy Rating Scale

1 2 3 4 5 6 7 8 9 10

Clear

Opaque

Also Available:

Divided Lites
Clear Glass



Note: See page 293 for important product details that may help with your purchase decision.

Bottom: Profiles, Salinas Glass, Door – 968HD, Sidelites – 971SLHD

Solid Panels



969HD
6
2'8" x 6'8"
2'10" x 6'8"
3'0" x 6'8"



978HD
6
2'8" x 6'8"
2'10" x 6'8"
3'0" x 6'8"



1005HD
6
2'8" x 6'8"
2'10" x 6'8"
3'0" x 6'8"



205HD
6
2'8" x 6'8"
2'10" x 6'8"
3'0" x 6'8"



203HD
6
2'8" x 6'8"
2'10" x 6'8"
3'0" x 6'8"



210HD
6
2'6" x 6'8" ‡
2'8" x 6'8" ‡
2'10" x 6'8" ‡
3'0" x 6'8" ‡



100
6E
2'0" x 6'8"
2'4" x 6'8" ‡
2'6" x 6'8" ‡
2'8" x 6'8" ‡
2'10" x 6'8" ‡
3'0" x 6'8" ‡
3'6" x 6'8" ‡

Sidelites

Blackstone™



310SL
6
10" x 6'8"
12" x 6'8" ‡
14" x 6'8" ‡

Crystalline™



916SL
6
10" x 6'8"
12" x 6'8" ‡
14" x 6'8" ‡

Sedona



139SL
10" x 6'8"
12" x 6'8" ‡
14" x 6'8" ‡

Salinas™



369SL
6
10" x 6'8"
12" x 6'8" ‡
14" x 6'8" ‡

Maple Park™



1006SL
6
10" x 6'8"
12" x 6'8" ‡
14" x 6'8" ‡

Avonlea™



1027SL
6
10" x 6'8"
12" x 6'8" ‡
14" x 6'8" ‡

Saratoga™



610SL
6
10" x 6'8"
12" x 6'8" ‡
14" x 6'8" ‡

Texas Star™



1029SL
6
10" x 6'8"
12" x 6'8" ‡
14" x 6'8" ‡

Wellesley™



620SL
6
10" x 6'8"
12" x 6'8" ‡
14" x 6'8" ‡

Riserva™



TS572SL
6
10" x 6'8"
12" x 6'8" ‡
14" x 6'8" ‡

Concorde™



416SL
6
10" x 6'8"
12" x 6'8" ‡
14" x 6'8" ‡

Kensington™



626SL
6
10" x 6'8"
12" x 6'8" ‡
14" x 6'8" ‡

Pembridge™



6500SL
6
10" x 6'8"
12" x 6'8" ‡
14" x 6'8" ‡

Privacy & Textured Glass Options

Add the code to the blank in the style number for the desired door and glass combination. For details on glass options, see page 216.

XK = **NEW** Reeded
XG = Geometric

XE = Satin Etch
XC = Chord

XJ = Chinchilla
XR = Rainglass

XN = Granite